

# Notification & Data

## DIGITAL FIRE



```
{
  "CustomerId": 200002,
  "MsgType": "DeviceData",
  "MsgData": {
    "DeviceId": "a8f71d01-1231-4e02-81bc-04ff3226a2ee",
    "SensorIdCode": 2521183,
    "DeviceType": 189,
    "ZoneNo": 1,
    "SignalStrength": 52,
    "BatteryLevel": 100,
    "SensorValue": 176,
    "Raw": "[nr:5d94a32e:86:00:00:26785f:f779d204:nr]"
  }
}
```

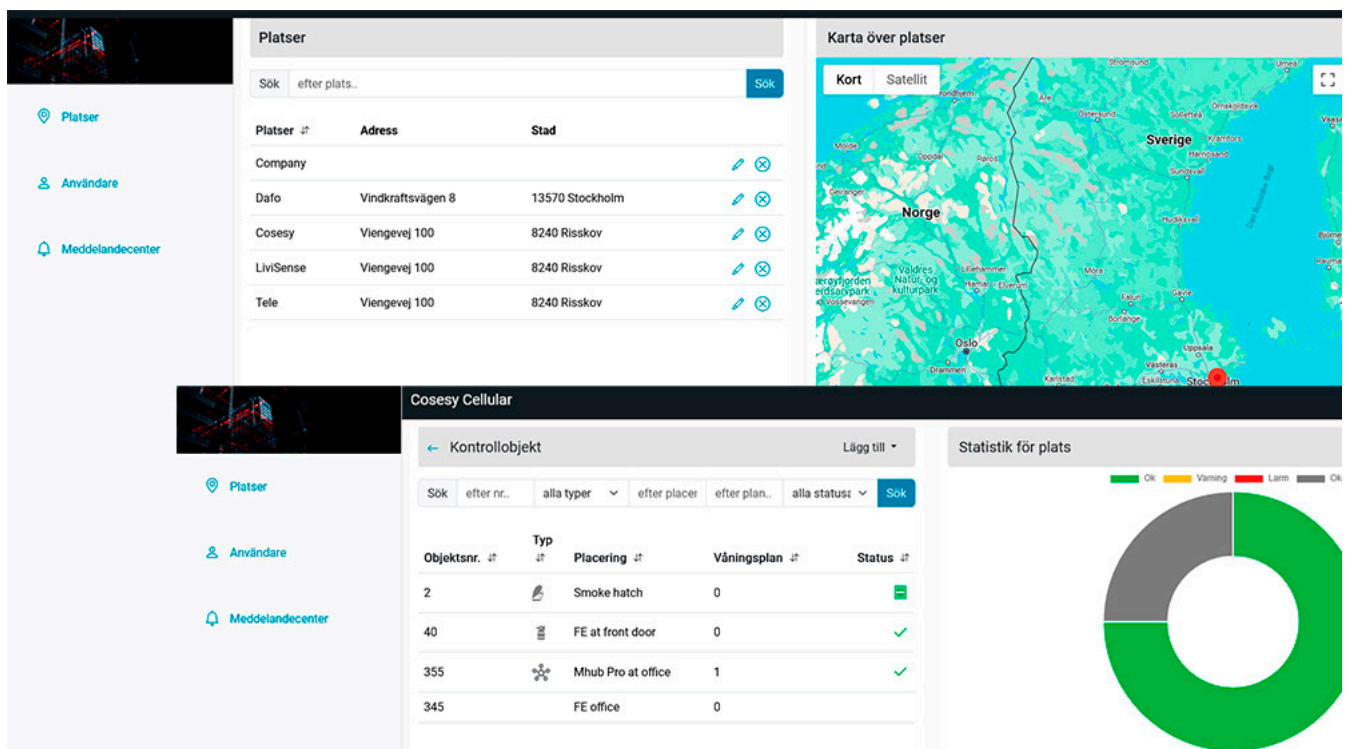


## Notifications

- E-mail, Mobile Push, SMS
- For service, owners and back-office
- With alarms and warnings
- .. or via APIs and your identity

## Interfacing & Integrations

- Option for your own user interface
- For apps and dashboards
- Your data and procedures
- Example: Cloud, Cellular, LoRa, MQTT



## Data

- **Alarms and Events:** bottle gone, tamper, limits exceeded, "too hot", faults, obstacles, humid, not closed, etc.
- **Time-series data:** graphs and raw data for early warning and BI. Weight, temperature, humidity, angle, light, etc.
- **System:** status, signal strength, mesh-network topology, logs

